

SUNRISE SPECIALS



Full plates. Fuller wallets.

Sunrise Pancake Special

Two fluffy buttermilk pancakes topped with whipped butter and 100% pure natural syrup with two farm-fresh eggs* or choice of bacon or sausage (750-840 cal).

Biscuits & Gravy with Bacon or Sausage

Three warm buttermilk biscuits with our classic sawmill gravy (640 cal) and your choice of bacon or sausage.

DRINKS



MIMOSAS

Glass Pitcher+

Strawberry
(220/990 cal)

Peach
(230/800 cal)

Orange
(140/550 cal)

ESPRESSO & COCOA

Latte Iced or hot
Regular, vanilla, or caramel
(110-370 cal)

Mocha Iced or hot
(290/360 cal)

Hot Chocolate
Topped with whipped cream
(380 cal)

COCKTAILS

Bloody Mary[†]
Featuring our special blend and Zing Zang[®] Bloody Mary Mix
(110 cal)

Classic Margarita
(210 cal)

Strawberry Margarita
(190 cal)

MILK & JUICES

Milk
Skim, reduced-fat, whole, or chocolate (170-320 cal)

100% Premium Juice
Orange or apple (180/220 cal)

FREE REFILLS with iced & hot teas, soft drinks, lemonades, and brewed coffee!



ICED TEAS & LEMONADES

Freshly Brewed Iced Tea
Unsweetened or sweet
(0/160 cal)
Peach (220 cal)

Old-Fashioned Lemonade
(210 cal)

Southern Half & Half
(210 cal)

SOFT DRINKS (0-230 cal)



Bottled Root Beer (210 cal)
(does not include free refills)

COFFEE & TEA

Freshly Brewed Coffee
Regular or decaf (0 cal)

Hot Tea
From Twinings[®] of London
(0 cal)

Eggs in the Basket **♥ IT'S BACK!**

Two slices of sourdough bread, each grilled with an egg* in the middle (430 cal). Served with choice of one classic side and bacon or sausage.

Egg Sandwich

Two farm-fresh eggs* on seared sourdough bread with tomato slices and mayo (480 cal). Served with one classic side.

Add bacon, sausage, or sugar cured or country ham (90-240 cal)

Add turkey sausage or Impossible[™] Sausage (170/210 cal)

Add Colby cheese (80 cal)

Biscuit Breakfast

Two hand-rolled buttermilk biscuits with choice of meat and one classic side.

Thick-sliced bacon (270 cal each)

Turkey sausage (220 cal each)

Smoked sausage patties (310 cal each) Sugar cured or country ham (230 cal each)

Impossible[™] Sausage (250 cal each) Add American cheese (100 cal)

SIDES

CLASSIC

Hashbrown Casserole

MADE IN-HOUSE EVERY DAY

Golden-brown and delicious, with chopped onion, Colby cheese, and savory spices (140 cal).

Fried Cinnamon Apples

Grade A Golden Delicious apple wedges simmered with cinnamon until perfectly tender (210 cal).

Tomato Slices (10 cal)

Coarse Ground Grits
(100 cal)

PREMIUM

Substitute any classic side for an upcharge, or order as an additional side.

Two Buttermilk Pancakes
(600 cal)
Substitute breakfast side

Loaded Hashbrown Casserole
with bacon crumbles & extra cheese (300 cal)
Substitute breakfast side

Fresh Fruit

(60 cal)
Substitute breakfast side

Add apple butter to biscuits (100 cal)

Add cheese to scrambled eggs (110 cal)



➔ Loaded Hashbrown Casserole

BREAKFAST MEATS

Crispy Homestyle Chicken
(530 cal)

Grilled Chicken Tenders
(160 cal)

U.S. Farm-Raised Catfish Fillet, Grilled or Fried
(170/400 cal)

Thick-Sliced Bacon
(190 cal)

Smoked Sausage Patties
(240 cal)

Impossible[™] Sausage Made From Plants
(210 cal)

Turkey Sausage **♥ IT'S BACK!**
(170 cal)

Sugar Cured Ham
(180 cal)

Country Ham
(190 cal)

Sampling of Bacon, Sausage & Sugar Cured or Country Ham
(270/280 cal)

LOOKING FOR TASTY ALTERNATIVES?

Egg whites or multigrain toast are available as a substitute for like items at no additional charge.

TAKE HOME MEALS

Order any entree and get a freshly prepared favorite for an upcharge, chilled and ready to warm up at home.

♥ SEASONAL FAVORITE

Fresh Strawberry French Toast Bake (900 cal)

Crispy Homestyle Chicken with Mac & Cheese (800 cal)

Smokehouse Grilled Chicken with Mashed Potatoes (410 cal)

Meatloaf with Mac & Cheese (490 cal)

AVAILABLE WITH PURCHASE OF AN ENTREE OF EQUAL OR GREATER VALUE. WHILE SUPPLIES LAST. ADDITIONAL RESTRICTIONS MAY APPLY.



† WINE-BASED BEVERAGE. DOES NOT INCLUDE SPIRITS. + EQUALS 4 GLASSES PER PITCHER. 2,000 CALORIES A DAY IS USED FOR GENERAL NUTRITION ADVICE, BUT CALORIE NEEDS VARY.

*MAY BE COOKED TO ORDER, CONSUMING RAW OR UNDERCOOKED MEATS, POULTRY, SEAFOOD, SHELLFISH, OR EGGS MAY INCREASE YOUR RISK OF FOODBORNE ILLNESS.



BREAKFAST



SWEET MORNINGS

A little something to share. (Or not.)

LIMITED TIME OFFER | Get both for an upcharge.

Cinnamon Roll Skillet

Fresh-baked mini rolls with gooey cinnamon filling topped with cream cheese icing (1250 cal).

Biscuit Beignets

Fluffy fried biscuit dough tossed in cinnamon sugar, then dusted with powdered sugar. Served with a sweet butter pecan sauce (690 cal).



► Cinnamon Roll Skillet



► Grandma's Sampler

WORLD'S BEST PANCAKES & FRENCH TOAST

Our signature pancakes & French toast are made to order and cooked just right—golden and crispy on the outside, fluffy and warm on the inside.

PAIRS WELL WITH A MIMOSA

♥ CRACKER BARREL FAVORITE

Grandma's Sampler

Served with 100% pure natural syrup and whipped butter
Two buttermilk pancakes or two slices of French toast with two freshly cracked eggs* and a sampling of bacon, sausage, and sugar cured or country ham. Served with one classic side.
Pancakes (750 cal) | French toast (630 cal)

♥ SEASONAL FAVORITE

Fresh Strawberry French Toast Bake

Thick-cut country bread soaked in vanilla custard, topped with cheesecake filling, baked 'til golden and topped with fresh strawberries, whipped cream, and powdered sugar. Served with strawberry syrup (980 cal) and your choice of bacon or sausage.

SUBSTITUTE 100% pure natural syrup (110 cal) for strawberry (180 cal), blueberry (120 cal), or sugar-free syrup (10 cal) at no additional charge.

Momma's Breakfast

Served with 100% pure natural syrup and whipped butter

Three buttermilk pancakes or four slices of French toast with two eggs* and choice of bacon or sausage.

Pancakes (960 cal) | French toast (1070 cal)

Strawberry Stuffed Cheesecake Pancakes

Two buttermilk pancakes layered with cheesecake filling and topped with fresh strawberries, powdered sugar, and strawberry syrup (1160 cal). Served with two eggs* and choice of bacon or sausage (340/390 cal).

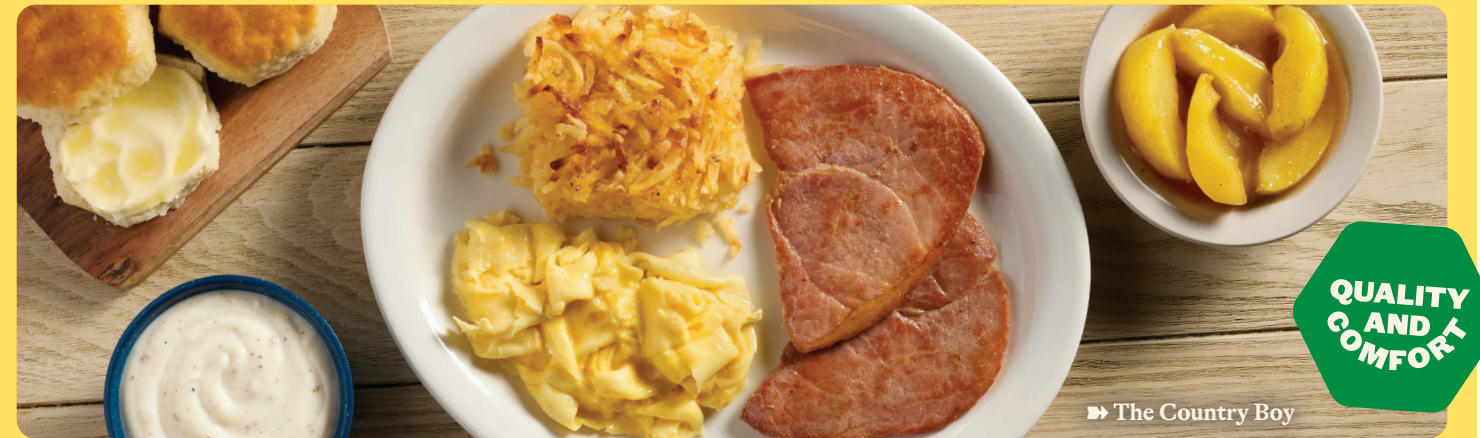
SIGNATURE PANCAKE PLATES

Two buttermilk pancakes with your choice of topping or flavor. Served with two eggs* and choice of bacon or sausage (340/390 cal).

Choose your plate:

Blueberry pancakes (620 cal) with blueberry syrup
Pecan pancakes (850 cal) with 100% pure natural syrup
Chocolate chip pancakes (890 cal) with 100% pure natural syrup
Fresh strawberry pancakes (620 cal) with 100% pure natural syrup

START YOUR DAY WITH GRADE A FARM-FRESH EGGS, HAND-CRACKED AND COOKED TO ORDER.



► The Country Boy

QUALITY AND COMFORT

CRACKER BARREL CLASSICS

Some say breakfast is what we do best. We're not about to argue. Featuring hand-cracked grade A farm-fresh eggs and hand-rolled buttermilk biscuits scratch-made on site, these are a sure-fire way to start your day right. Eating light? Egg whites can be substituted for all fresh eggs.

The Country Boy

Three eggs* with tender sirloin steak tips in a rich buttery garlic sauce or choice of sugar cured or country ham (520-590 cal). Served with biscuits & gravy (500 cal) and two classic sides.

Uncle Herschel's Favorite® ♥ IT'S BACK!

Two eggs* (150 cal) with choice of breakfast meat. Served with biscuits & gravy (500 cal), coarse ground grits, and one classic side.

Choose one breakfast meat:
Hamburger Steak** (480 cal) ♥ IT'S BACK!
Sugar cured ham (180 cal) Fried U.S. farm-raised catfish fillet (400 cal)
Country ham (190 cal) Grilled U.S. farm-raised catfish fillet (170 cal)
Crispy tender dippers (300 cal) New York strip steak* (470 cal) additional

The Old Timer's

Two eggs* with choice of bacon or sausage (340/390 cal). Served with biscuits & gravy (500 cal) and one classic side.

Grandpa's Country Fried Breakfast®

Two eggs* with choice of country fried steak or chicken fried chicken with sawmill gravy (740/750 cal). Served with biscuits & gravy (500 cal) and one classic side.

Good Morning Breakfast ♥ IT'S BACK!

Two scrambled egg whites with coarse ground grits, a side of fresh fruit, sliced tomatoes, and turkey sausage (390 cal).

GO AHEAD, CHANGE IT UP.

Substitute loaded hashbrown casserole (300 cal)
Substitute Impossible™ Sausage (210 cal)
Substitute turkey sausage (170 cal)
Add a slice of Colby or American Cheese (80/100 cal)

Add apple butter (100 cal)
Substitute egg whites for hand-cracked eggs at no charge (60 cal).

GRAVING MORE? EXTRA BACON MAKES EVERYTHING BETTER.

Thick sliced bacon (190 cal)
Smoked sausage patties (240 cal)
Garlic steak tips - half portion (300 cal)



HEARTY COUNTRY MORNINGS

Steak & Eggs

10 oz New York strip steak grilled to order* your way with buttery garlic sauce, two eggs*, and warm buttermilk biscuits (900 cal). Served with one classic side.

Steak & Egg Hashbrown Casserole

A double portion of our signature hashbrown casserole, griddled and layered with Colby cheese, scrambled eggs, and buttery garlic sirloin steak tips. Topped with crispy fried onions, diced tomatoes, and green onions. Served with warm buttermilk biscuits. (1340 cal)

Bacon & Egg Hashbrown Casserole

Thick-sliced bacon, scrambled eggs, and Colby cheese layered with a double portion of our signature hashbrown casserole. Topped with diced tomatoes, green onions, and fried onions. Comes with buttermilk biscuits. (1190 cal)

NEW The Breakfast Burger

Crispy bacon, a sunny-side up egg*, and our signature hashbrown casserole all on a half-pound beef burger*** topped with American cheese on a toasted buttermilk bun (1200 cal). Served with one classic side.

Sausage & Egg

Hashbrown Casserole WITH SAWMILL GRAVY

Crumbled smoked sausage, scrambled eggs, onions, red peppers, green chiles, and Colby cheese layered with a double portion of our signature hashbrown casserole. All served over sawmill gravy and topped with diced tomatoes, green onions, and fried onions. Served with warm buttermilk biscuits. (1380 cal)



► Steak & Eggs

2,000 calories a day is used for general nutrition advice, but calorie needs vary. Additional nutrition information available upon request.

*MAY BE COOKED TO ORDER. CONSUMING RAW OR UNDERCOOKED MEATS, POULTRY, SEAFOOD, SHELLFISH OR EGGS MAY INCREASE YOUR RISK OF FOODBORNE ILLNESS. OUR FOOD MAY CONTAIN OR COME INTO CONTACT WITH COMMON ALLERGENS, INCLUDING MILK, EGGS, FISH, SHELLFISH, TREE NUTS, PEANUTS, WHEAT, SOY, AND SESAME. BEFORE PLACING YOUR ORDER, PLEASE INFORM YOUR SERVER IF A PERSON IN YOUR PARTY HAS A FOOD ALLERGY.

***WE COOK OUR HAMBURGERS MEDIUM, MEDIUM WELL AND WELL DONE.

"GRANDPA'S COUNTRY FRIED BREAKFAST", "UNCLE HERSCHEL'S FAVORITE" AND "CRACKER BARREL OLD COUNTRY STORE" ARE SERVICE MARKS/TRADEMARKS OF CBOCS PROPERTIES, INC. ©2026 CBOCS PROPERTIES, INC.

Scan for Spanish menu.



Scan for nutrition and allergen information. crackerbarrel.com/nutrition